

Balance Pressure Thermostatic Steam Trap Clean Steam Trap TSS6 (DN1/2" - 1½")

DESCRIPTION

The TSS 6 all stainless steel thermostatic steam traps and air vents are specifically designed for use in reactors, sterilizers and distribution lines in clean and pure steam systems. The small size makes it ideal for use with a wide variety of these equipment.

MAIN FEATURES

1. Modulating discharge
2. Wide range of connections options
3. Excellent air discharge
4. Simple and compact design

STANDARD SURFACE FINISH

Internal whetted parts: ≤ 0.51 microns Ra-SF1

External: ≤ 0.76 micron Ra-SF3

Other surface conditions see IS PV20.00-Technical info.

Ultrasonic cleaning.



| FLOW RATE CAPACITY IN Kg/h | | | | | | | | | | |
|----------------------------|-------------|-----------------------------|-----|-----|-----|-----|------|------|------|------|
| MODEL | SIZE | DIFFERENTIAL PRESSURE (bar) | | | | | | | | |
| | | 0,2 | 0,3 | 0,5 | 1 | 1,5 | 2 | 3 | 4 | 6 |
| TSS6(A) | 1/2" to 1½" | 320 | 380 | 410 | 550 | 680 | 909 | 1081 | 1199 | 1403 |
| TSS6(B) | 1/2" to 1½" | 470 | 495 | 518 | 697 | 792 | 1026 | 1231 | 1436 | 1682 |

Capacities shown refer to condensate at 5°C below saturated steam temperature.
Capacities for cold condensate discharge at 20°C are around two times greater.

| | | |
|-----|----------------------------|--------|
| PMA | Max. allowable pressure | 10 bar |
| TMA | Max. allowable temperature | 177°C |
| PMO | Max. operating pressure | 6 bar |
| TMO | Max. operating temperature | 165°C |

OPTIONS:

Special designs under request.
Different standard connection

USE:

Saturated clean steam

AVAILABLE MODELS:

TSS 6

SIZES:

1/2" to 1½, DN8 to DN25

CONNECTIONS:

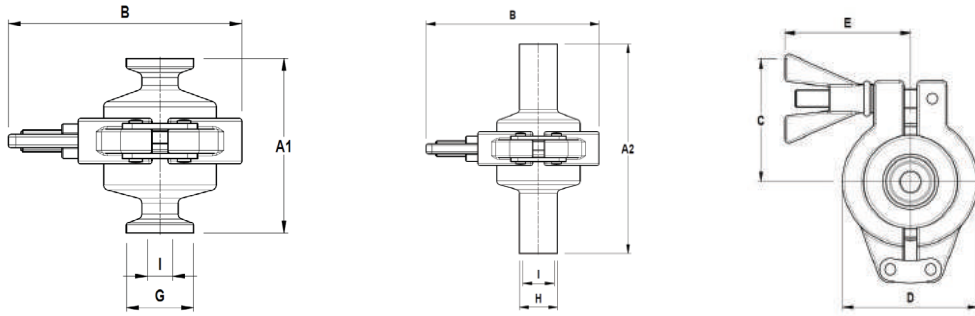
ASME BPE, DIN and ISO.
Clamp ferrules or tube weld ends

PACKAGING:

Assembling and packaging in a clean room certified according to ISO 14644-1.
The product is end capped and vacuum sealed with recyclable plastic film to avoid contamination

INSTALLATION:

Vertical installation



DIMENSIONS (mm) ASME BPE

| Size DN | A1 | A2 | B | C | D | E | *G | H | I | WGT. kg |
|---------|----|----|----|------|----|------|------|-------|-------|---------|
| 1/2" | 65 | 95 | 87 | 57,5 | 61 | 56,5 | 25 | 12,7 | 9,4 | 0,7 |
| 3/4" | 65 | 95 | 87 | 57,5 | 61 | 56,5 | 25 | 19,05 | 15,75 | 0,7 |
| 1" | 65 | 95 | 87 | 57,5 | 61 | 56,5 | 50,5 | 25,4 | 22,1 | 0,8 |
| 1½" | 65 | NA | 87 | 57,5 | 61 | 56,5 | 50,5 | 38,1 | 34,8 | 0,8 |

DIMENSIONS (mm) DIN

| Size DN | A1 | A2 | B | C | D | E | *G | H | I | WGT. kg |
|---------|----|----|----|------|----|------|------|----|----|---------|
| 10 | 65 | 95 | 87 | 57,5 | 61 | 56,5 | 34 | 13 | 10 | 0,7 |
| 15 | 65 | 95 | 87 | 57,5 | 61 | 56,5 | 34 | 19 | 16 | 0,7 |
| 20 | 65 | 95 | 87 | 57,5 | 61 | 56,5 | 34 | 23 | 20 | 0,8 |
| 25 | 65 | 95 | 87 | 57,5 | 61 | 56,5 | 50,5 | 29 | 26 | 0,8 |

Clamp ferrules DIN 32676 Series A. Tube weld DIN-EN 10357 Series A (DIN 11850 Series 2)

DIMENSIONS (mm) ISO

| Size DN | A1 | A2 | B | C | D | E | *G | H | I | WGT. kg |
|---------|----|----|----|------|----|------|------|------|------|---------|
| 8 | 65 | 95 | 87 | 57,5 | 61 | 56,5 | 25 | 13,5 | 10,3 | 0,7 |
| 10 | 65 | 95 | 87 | 57,5 | 61 | 56,5 | 25 | 17,2 | 14 | 0,7 |
| 15 | 65 | 95 | 87 | 57,5 | 61 | 56,5 | 50,5 | 21,3 | 18,1 | 0,8 |
| 20 | 65 | 95 | 87 | 57,5 | 61 | 56,5 | 50,5 | 26,9 | 23,7 | 0,8 |

Clamp ferrules DIN 32676 Series B, Tube weld ISO 1127 Series 1

*Special versions or non-standard sanitary clamp ferrules are available on request.

MATERIALS

| POS. | DESIGNATION | MATERIAL |
|------|--------------|-----------------------------|
| 1 | Body | AISI316L / 1.4404 |
| 2 | Cover | AISI316L / 1.4404 |
| 3 | *Thermostat | AISI316L / 1.4404 |
| 4 | *Gasket | PTFE/TFM® Envelope gasket** |
| 5 | Safety clamp | AISI316 / 1.4401 |

*Available space parts.

**FDA/USP Class VI seals certificate on request.

